

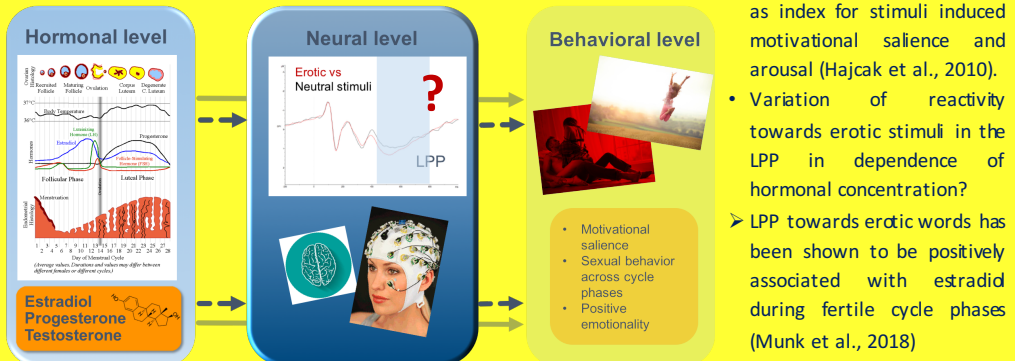
Is the reactivity towards erotic pictures in ERPs during females' menstrual cycle influenced by sex steroids?

Aisha Munk & Juergen Hennig
Differential & Biological Psychology, University of Giessen, Germany

Contact: aisha.j.munk@psychol.uni-giessen.de

THEORETICAL BACKGROUND

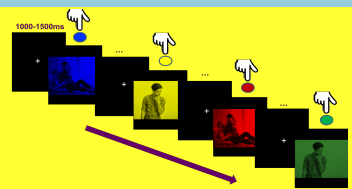
Associations of sex hormones, neural reaction and behavior across the female menstrual cycle



METHOD

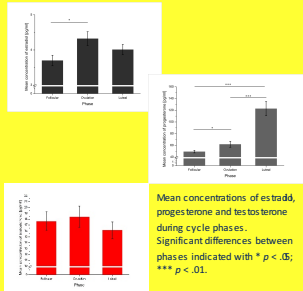
EROTIC PICTURE STROOP PARADIGM

- N = 35 women (M = 24.7Y) without hormonal contraceptives
- 3 measures: follicular phase (FO)- Ovulation (OV)- & luteal phase (LU)
- Estradiol, progesterone, and testosterone samples (saliva) using Enzyme-Linked Immunosorbent Assay (ELISA)
- Task: Erotic Picture Stroop Paradigm
- 32 Scalp-electrodes; 320 Trials
- LPP: CP1 and CP2; 400-900ms poststimulus

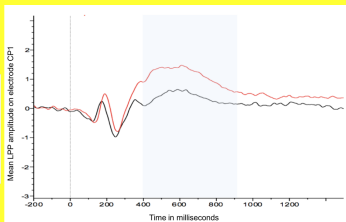


RESULTS

Manipulation check: Hormonal levels during cycle phases

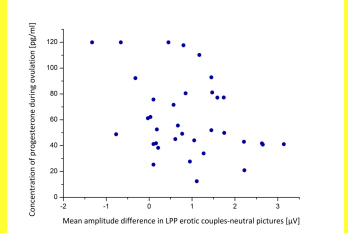


LPP higher in reaction to erotic than towards neutral pictures



LPP in reaction to neutral (black line) vs. erotic couple pictures (red line) on electrode CP1: $F_{(1,34)} = 49.02, p < .01, \eta^2 = .590$

LPP in reaction to erotic pictures negatively associated with progesterone concentration during ovulation



LPP in reaction to pictures of erotic couples (-neutral pictures) during ovulation: $r_{(15)} = -.351, p < .05$

DISCUSSION

